

Kalido[®] Business Information Modeler[™]

The Kalido Business Information Modeler is a revolutionary approach for the development and deployment of Kalido business models. It incorporates a number of innovative features that improve productivity, dramatically reducing the time it takes to make changes and enabling more effective communication with your business users.

The Challenge

During your initial implementation, you built a conceptual model of how to originally configure your BI infrastructure. Unfortunately, it's disconnected from the physical model and no longer current. Now, the business needs new reports requiring new data from new sources, and you have no idea how the current system compares to the old set up. You can't easily make sense of the physical data model, and there's no time or resources to convert the data model to a language the business understands. How will you deliver updated data views on time?

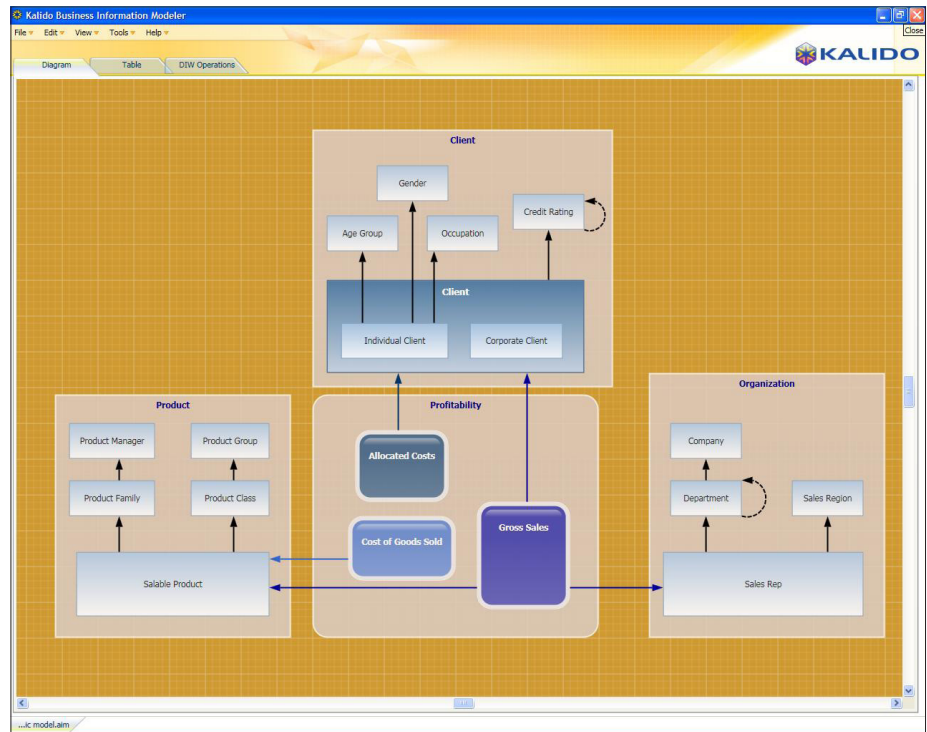
The Solution

A key component of the Kalido[®] Information Engine[™], the Kalido Business Information Modeler[™] is a rich interactive environment for producing models that drive Kalido warehouses and downstream BI tools. The Kalido Dynamic Information Warehouse[™] automatically generates physical data models from the business models built in the Kalido Business Information Modeler. When the business needs new views, simply change the model to drive all the underlying infrastructure changes.

Key Features

Easily and quickly builds conceptual and logical models

Instead of modeling data and their structures, the Kalido Business Information Modeler allows you to model the actual parts of your business – customers, products, assets, transactions, even people – and define how you want to see information in context.



The Kalido Business Information Modeler provides user-relevant interfaces to help business and IT collaborate on visually collecting requirements and understanding information flows to meet the analytical and reporting needs of BI tool users.

Gesture-based business modeling interface

Using Kalido's patent-pending technology, the Kalido Business Information Modeler provides a graphical design interface that can be used to develop and refine business requirements for new and existing information. Specific mouse-based click-and-drag gestures build context-specific modeling objects that dramatically reduce the time and effort to create business models, and allow IT to quickly build a model that the business can understand at first glance.

Automatically keeps the model in sync with the Kalido warehouse

The Kalido Business Information Modeler can be used to change and update your model directly against the Kalido Dynamic Information Warehouse, allowing you ultimate flexibility and agility in meeting the information needs of your business.

Drives BI metadata creation and maintenance

In conjunction with the Kalido Universal Information Director[™], business models created and managed in the Kalido Business Information Modeler extend out to control the BI metadata

configurations in popular BI tools such as Cognos and Business Objects, delivering business-model-driven BI.

User-specific views

The Modeler presents views of the business model that fit the needs of BI Directors and data architects. Graphical representations make the model understandable for the business, while tabular views with property listings and other relevant technical variables are available for bulk editing and viewing by IT staff.

Key Benefits

Design business models collaboratively with IT and business sponsors across functional departments and geographies

Without cryptic names or IT jargon, the Modeler helps business and IT collaborate for better BI requirements definition that fits the needs of the BI users. Errors in the business model are captured for correction, but don't impede your progress as you build out the conceptual model.

Share models across business units to speed development and delivery of new reports

Business models can be developed as fragments that can be shared across the organization and serve as foundational components for other larger, related business models.

Easily design and change in response to changing business conditions

IT can use the business model as the source of all subsequent changes in the BI infrastructure. Simple gesture-based changes can be accomplished in a few minutes, saving days or weeks compared to traditional approaches. Prior business model versions can be preserved so there is always a record of how things used to be, providing an audit trail of changes over time.

About the Kalido Information Engine

The Kalido Information Engine is a suite of products that gives customers the ability to manage their entire BI infrastructure. Unlike traditional approaches, the Kalido Information Engine puts information management in the hands of the business, while satisfying the strict data management requirements of IT. Working in unison with existing transaction systems, data warehouses and front-end BI tools, the Kalido Information Engine brings new levels of flexibility and insight to corporate decision-making that change how, and the cost at which, business gets done.

The Kalido Information Engine is composed of the Kalido suite of products: Kalido Business Information Modeler, Kalido Dynamic Information Warehouse, Kalido Master Data Management™ and Kalido Universal Information Director.

About Kalido

Kalido delivers active information management for business. Developed through years of successful best practice implementations, Kalido's robust, business-model driven information management engine automatically feeds information to end users through their BI tools, making them more productive far more quickly and reducing internal costs. With Kalido, users never again have to wait for months to answer fundamental questions about business performance – which products are selling, which customers are profitable, and which markets are most promising.

To learn more about Kalido's Active Information Management solutions, please visit <http://www.kalido.com>.

Contact Information

US Tel: +1 781 202 3200

Eur Tel: +44 (0)845 224 1236

Email: info@kalido.com

Website: <http://www.kalido.com>

